

1

(1) openX:\...\Samples\ Para

(2) PC_CRECL

(3) PC_MULDRIQD

2 PCPARA

a)

b)

c)

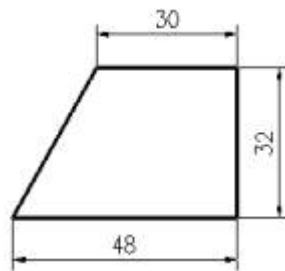
d)

e)

(1)

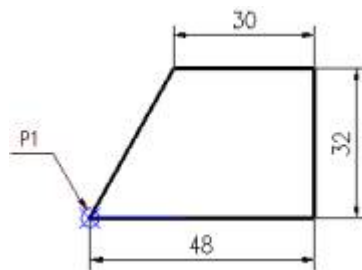


(2)

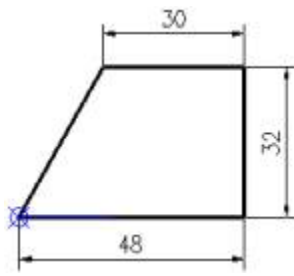


(3) P1

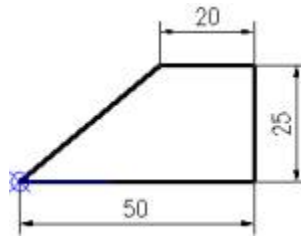
P1



(4) PC_CRE



(5) PC_MULDRI



:

.

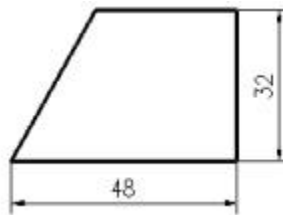
3

a)

b)

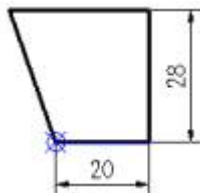
c)

(1) 2.(2)

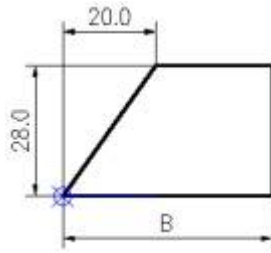


(2) PC_CRE

(3) PC_MULDRI



(4) PC_PARA_SHOW

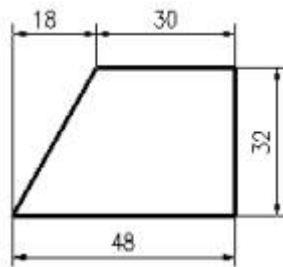


4

a)

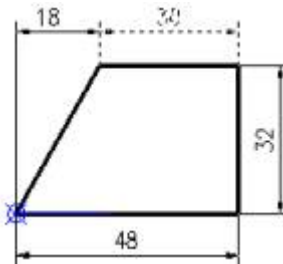
b)

(1) 2.(2)

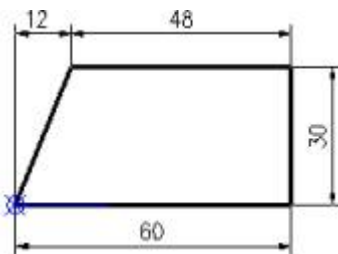


(2) PC_CRE

(3) PC_PARA_SMANY



(4) PC_MULDRI



5

a)

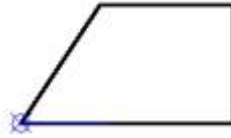
b) ()

c)

(1)

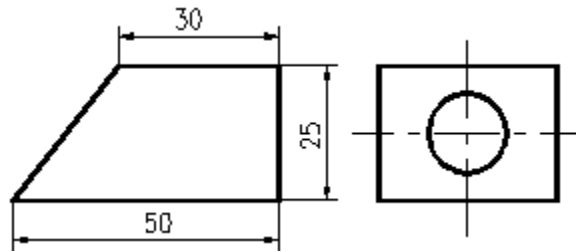


(2) 0

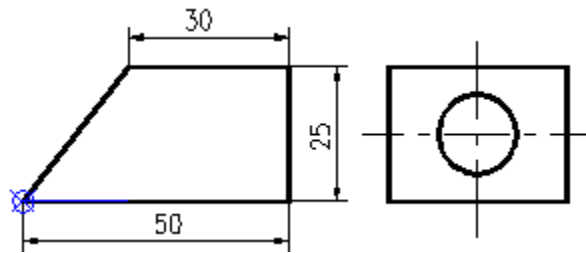


6

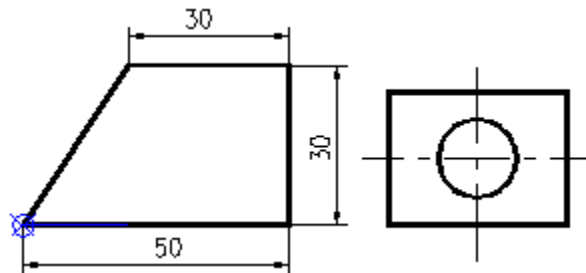
(1) 2.(2)



(2) PC_CRE

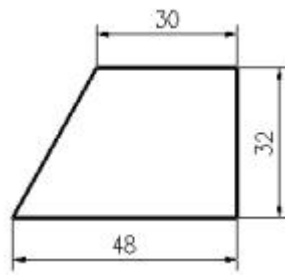


(3) PC_PARA_DRIVE ,



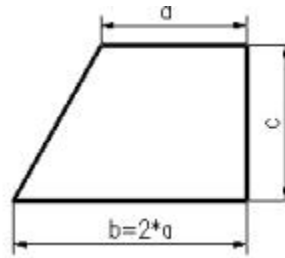
7

(1).

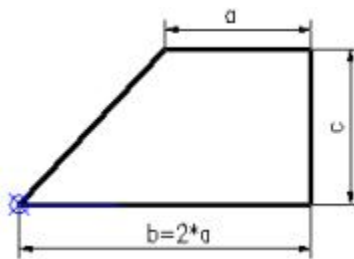


(2). PC_CRE

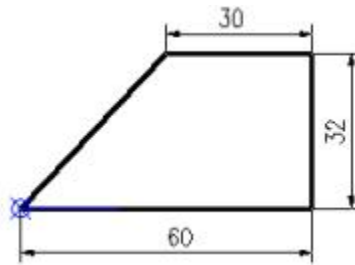
(3). DEF



(4). PC_MULDRI a b a

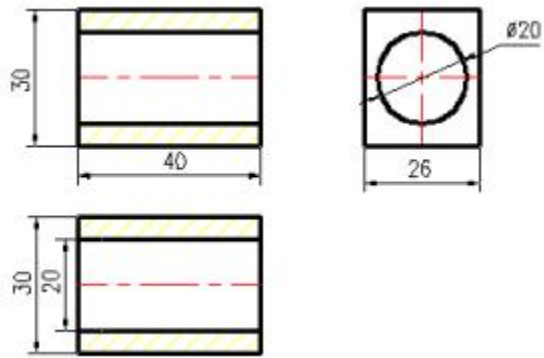


(5). PC_PARA_SEXP



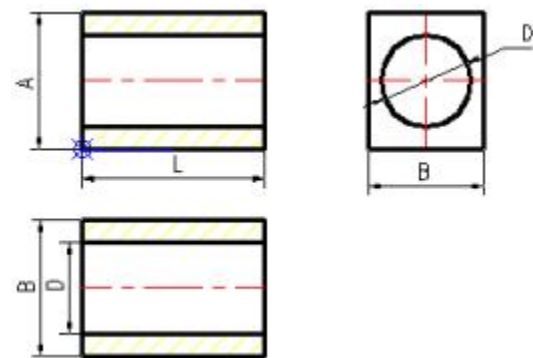
8.

(1).



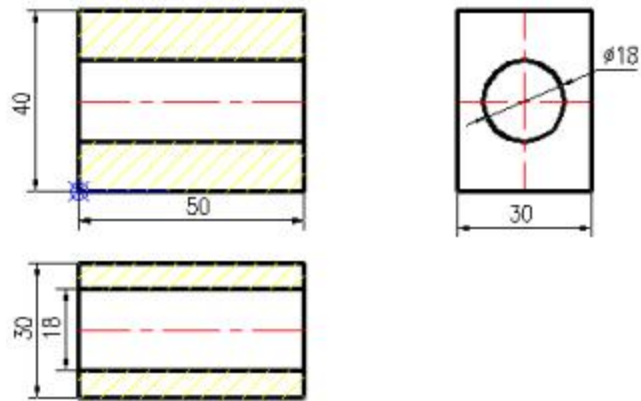
(2). PC_CRE

(3). PC_PARA_DEFEXP 13-13



(4). PC_PARA_SEXP

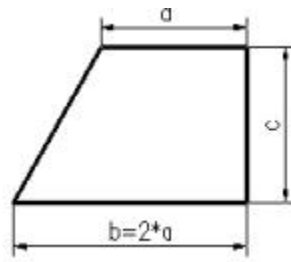
(5). PC_PARA_DRIVE



9.

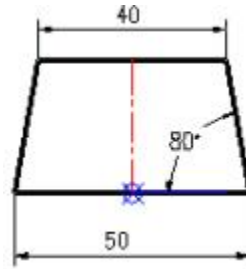
(1).

(2). CL DEF



(3). QD_PC_PARA_WSER

10.



(1).

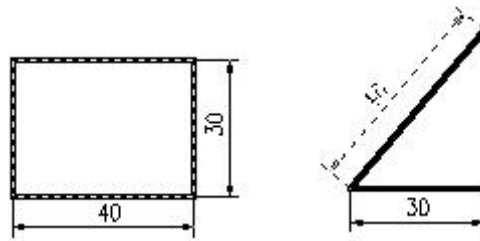
(2). PC_PARA_CREATE809090



(3). 90

11.

PCCAD



(a)

(b)

13-12

PCCAD13-12a13-13 ""13-12b



