

IFCTHCAD

IFCImport IFCExport

THCAD BIMIFC

- IFCTHCAD
- THCADIFC
- IFC

IFC

IFCIFCIFCBIM

THCAD BIMIFC2x3IFC4IFC 2X32.0IFCBIMPsets

THCADIFCIfcPropertySetIFC

IFCTHCAD BIM

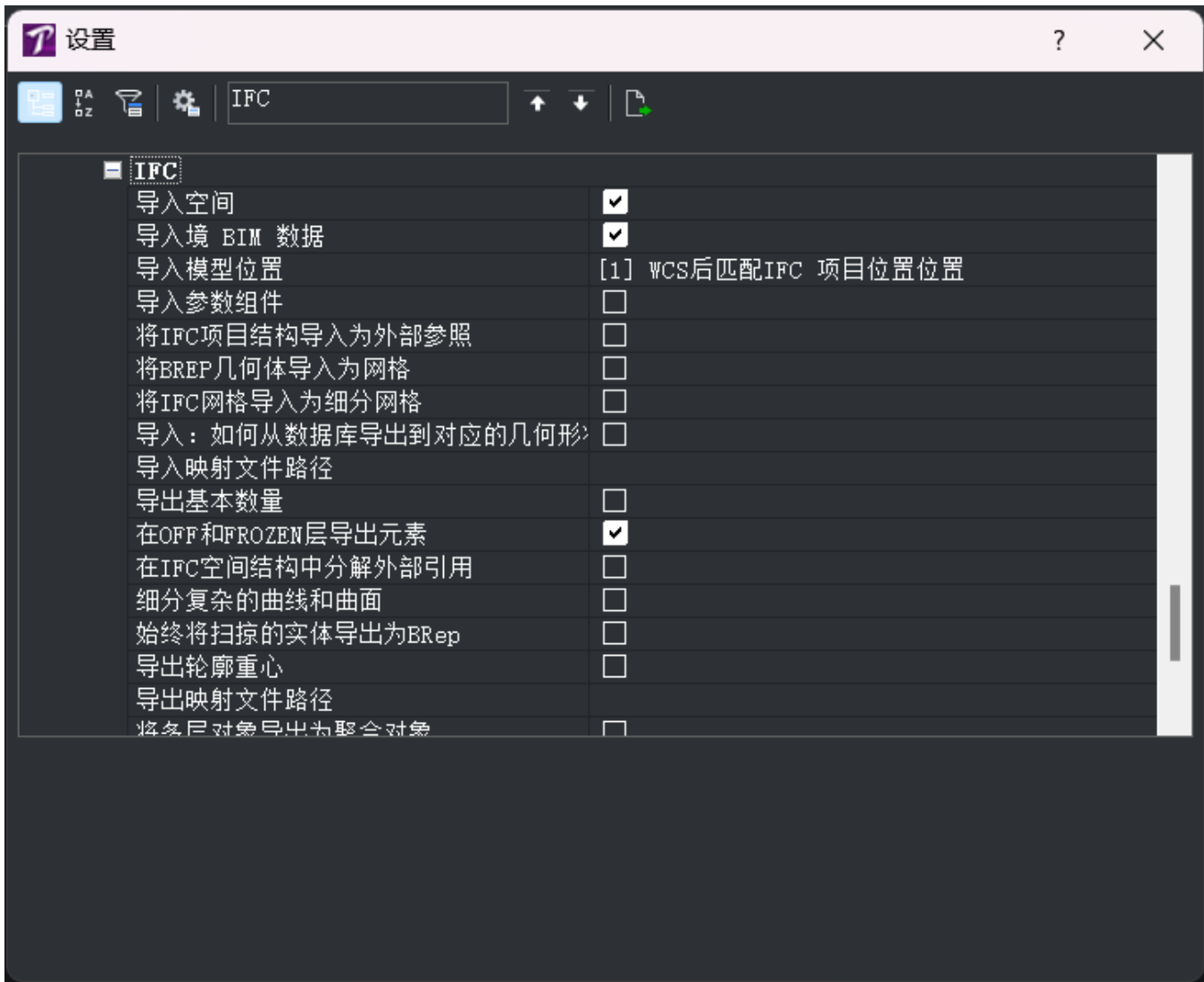


IFC2x3IFC4

IFC4IFC2x3IFC2x3""IFCIFC4IFC4IFC4

IFC

IFC

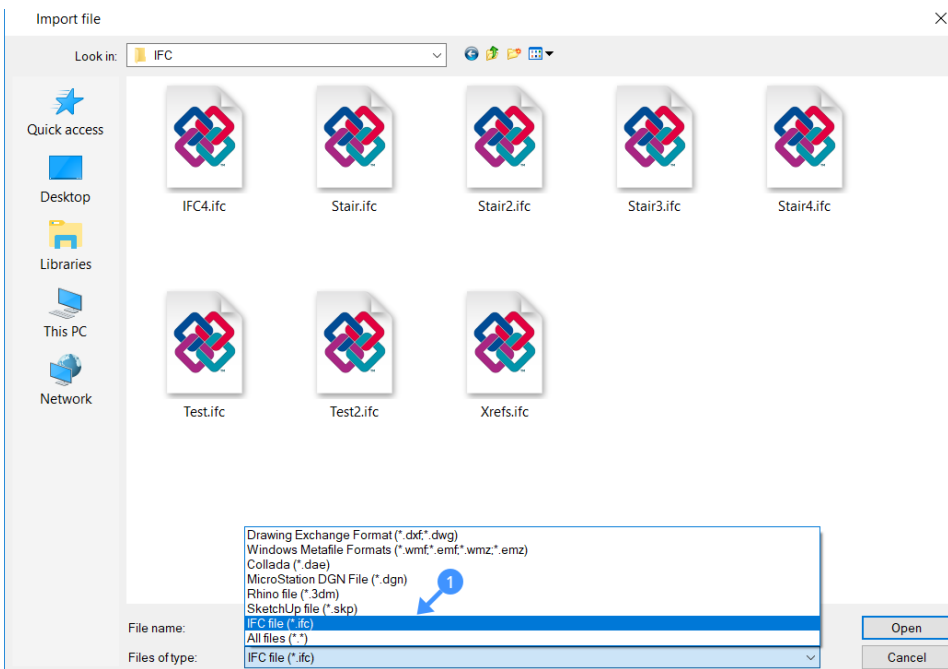


	/IfcSpaceBIM IfcSpaceBIM Room
BIM	/BIMBIMTHCAD BIM
	<ul style="list-style-type: none"> • 0THCAD WCSIFC • 1THCAD WCSIFC
	/
IFC	/IFCRefIFC
BREP	/BREP BREPTHCAD
	" IFC"
	/BIM BIMIFC
OFFFROZEN	/****BIM

IFC	//IFC <i>IfcSiteIfcBuilding</i> BIM ClassifyBIM XReference
	" IFC/"
	/
	""FacetResModeler ""
	GUID1 2 3

THCADIFC

1. IFCImport
2. .ifc1IFC

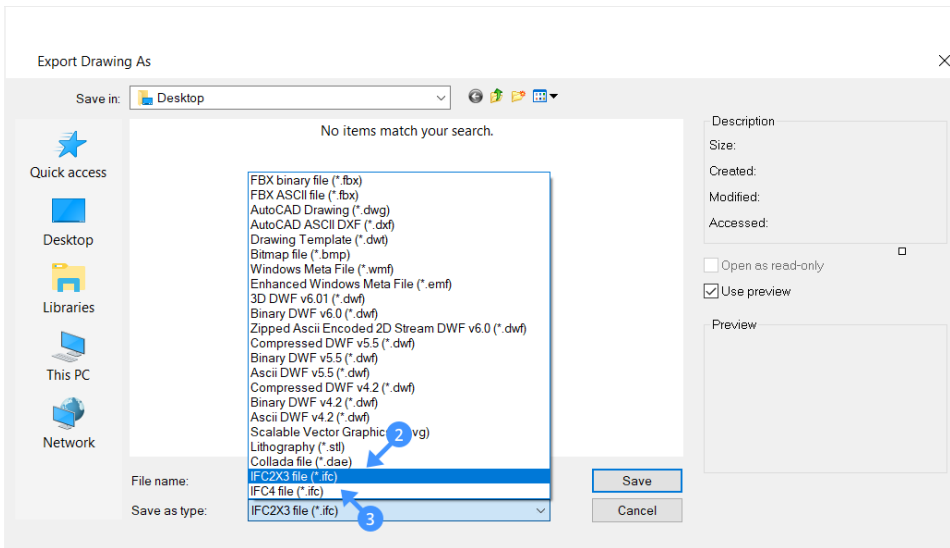


3. ""IFC
IFC2x3IFC4IFC
THCAD BIM
4. "" BIM"IFC"IFC"

THCADIFC

1. IFCTHCAD""

2. ".ifc"IFC2X3IFC43

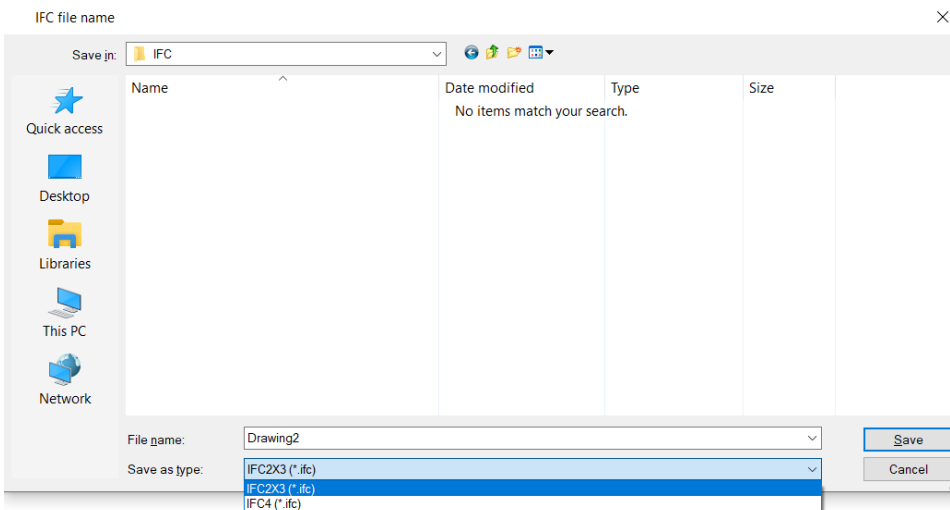


3. IFC
BIMIFC2X3IFC4IFC
4. "" BIM"IFC"IFC"

IFC

1. IFCIFCEXPORTHome ToolbarExport to IFC

2. IFC <>
IFC
"IFC"

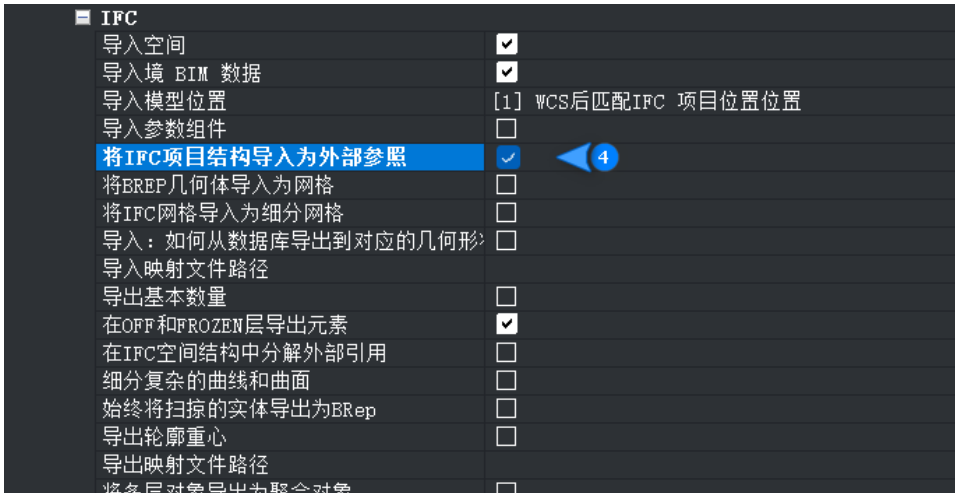


3. IFCIFCIFC2X3IFC4""IFC

IFC

1. Go to **Settings** (type **Settings** in the command line or go to Settings in the ribbon > Settings).
2. Navigate to BIM > Import and Export > IFC.

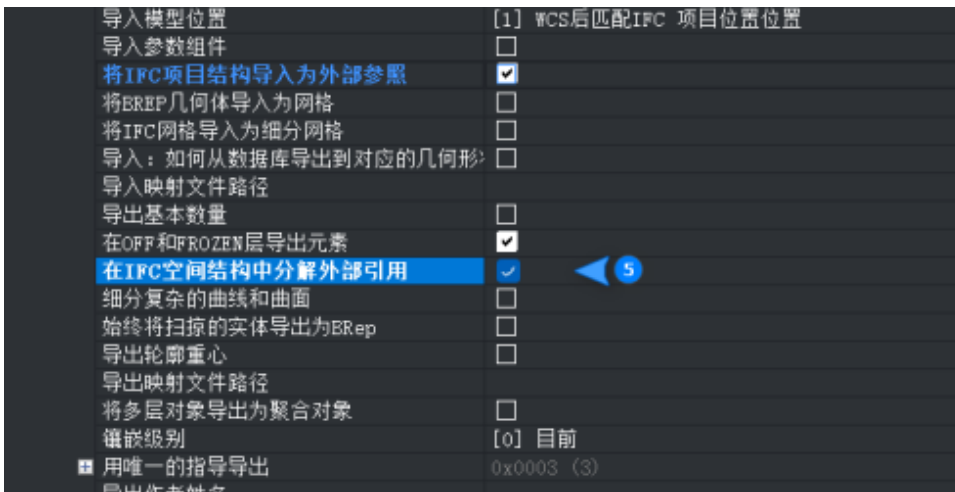
3. Check 'Import IFC project structure as xrefs ' box (4).



4. Type **Import** into the command line. Specify which .ifc file you want to open and click **Open**.
The drawing will now open with Xrefs made for each floor in each building. This allows you to easily split large files into smaller THCAD files.

Export a THCAD BIM Project with Xrefs exploded

1. Use the **BIM Classify** command to Classify Xrefs as BIM XReferences.
2. `“”>“”`
3. `BIM>> IFC`
4. `“IFC”5`



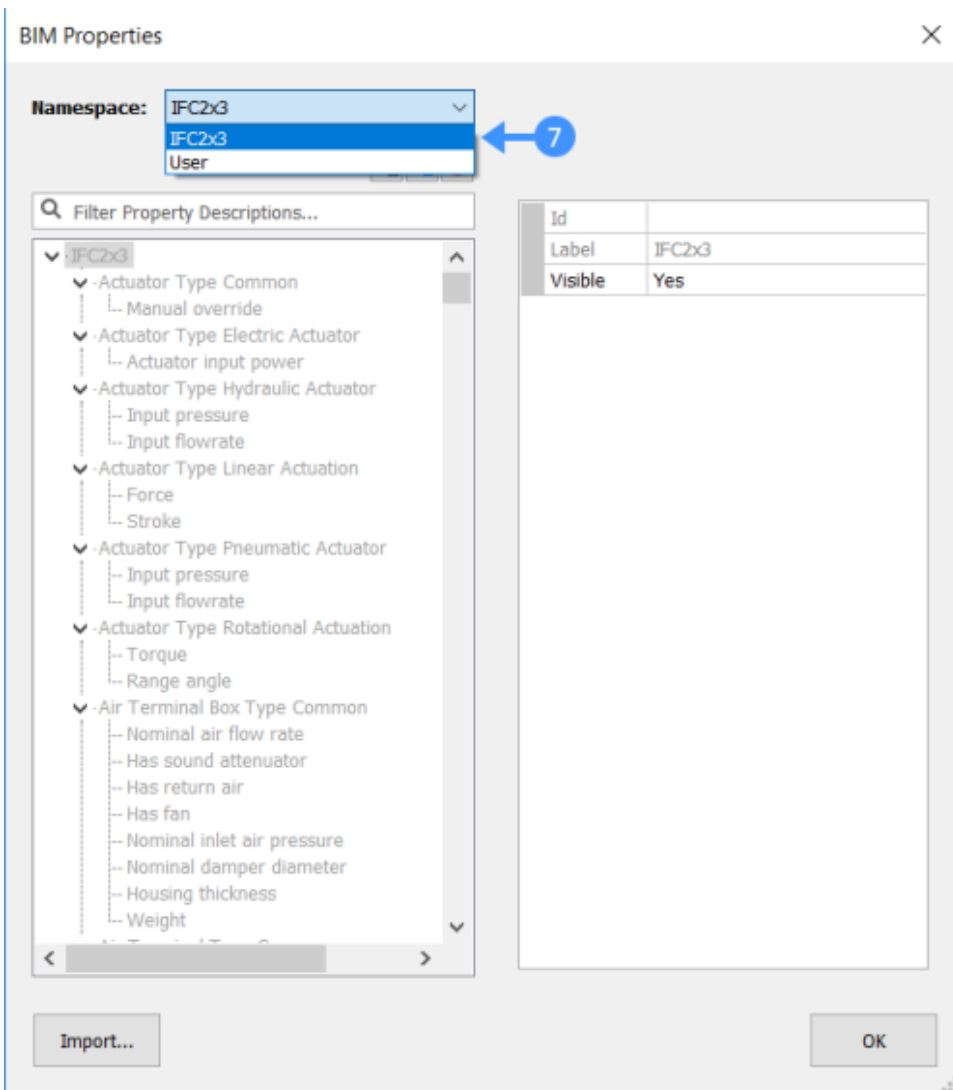
5. `THCAD“ IFC2x3”“ IFC4””Xref`

IFC

1. `“”>“”>“”6`



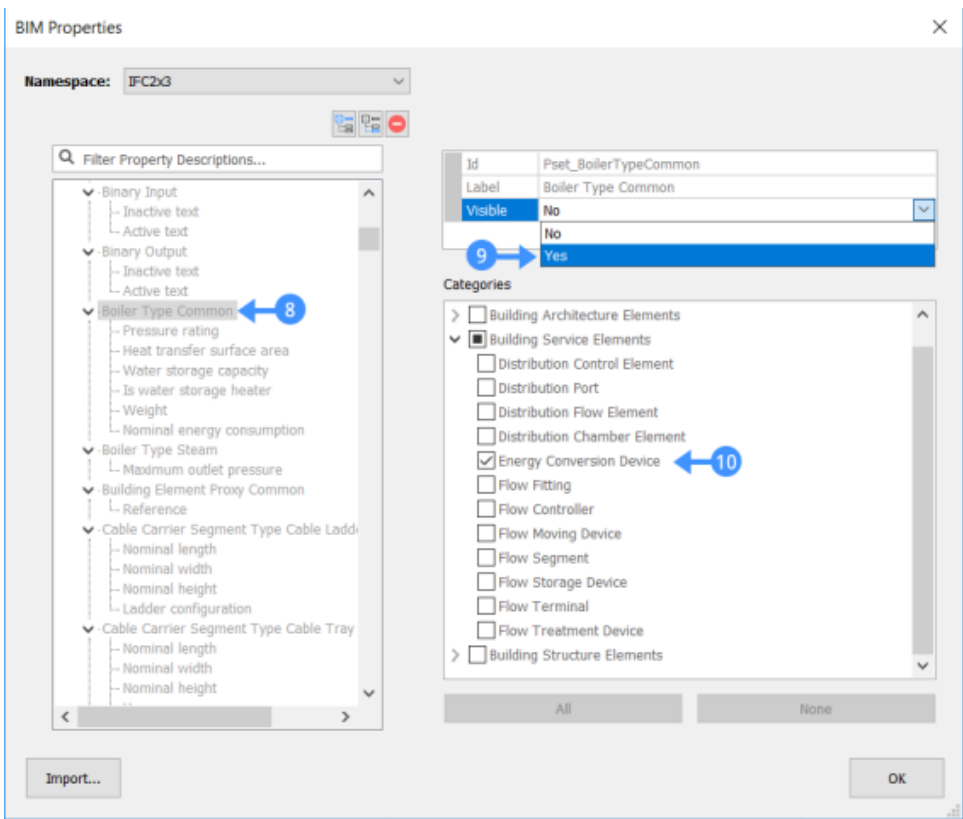
2. 7IFC2x3



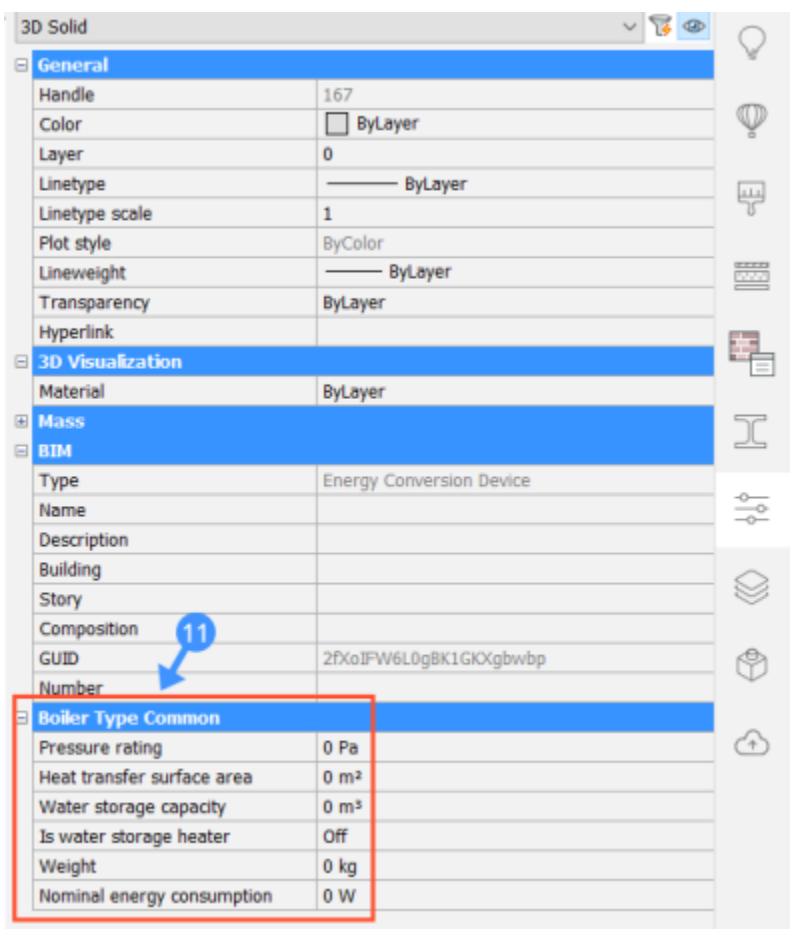
3. 8

4. "g"

5. "IFC10"



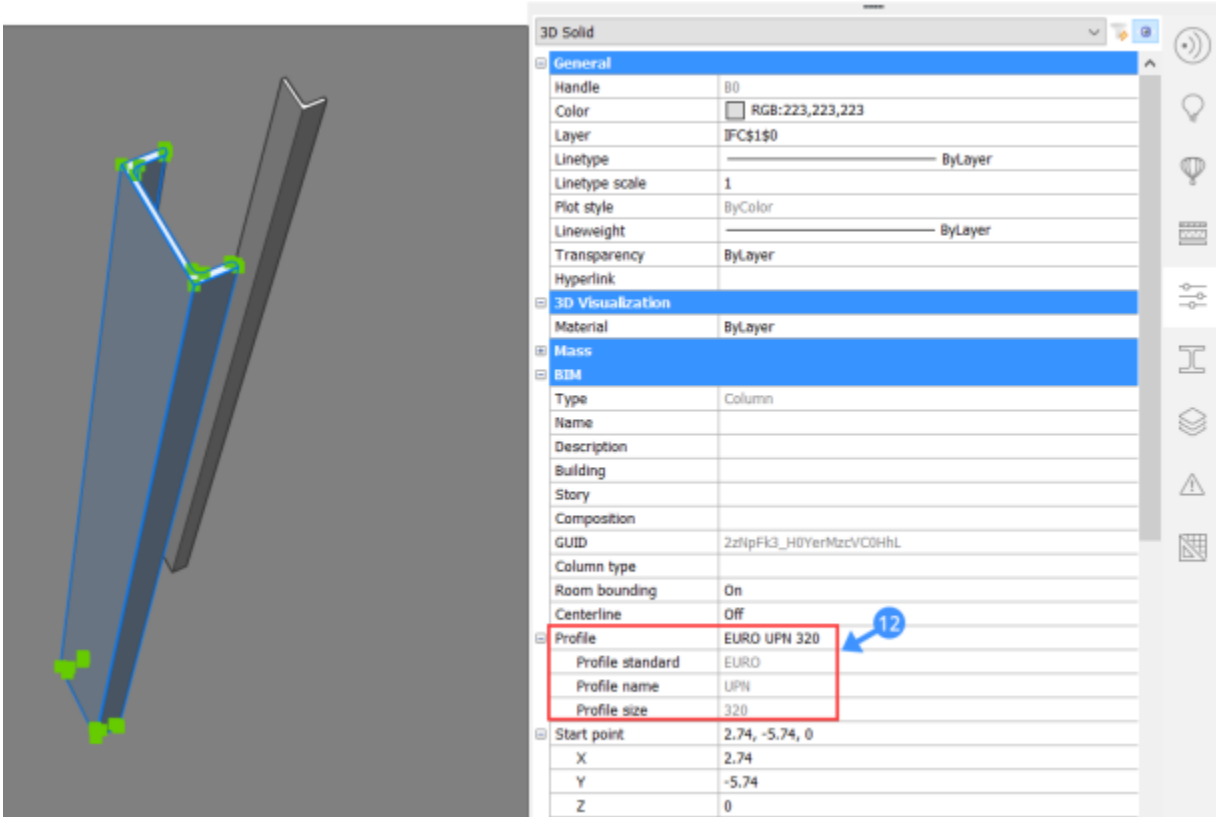
- 6. ""
- 7. ""
- 8. 11



IFC

IFC

When importing profiles from an IFC file to THCAD, the profiles will be assigned with proper Profile Standard, Profile Name and Profile Size in the Properties Panel (12).



Supported IFC Classes

Following IFC Classes are supported by THCAD BIM. These are the same categories as the classify options in the BIMClassify command.

IfcWall
IfcBeam
IfcColumn
IfcSlab
IfcStair
IfcStairFlight
IfcRamp
IfcRampFlight
IfcRailing
IfcCurtainWall
IfcRoof
IfcBuildingElement
IfcSite
IfcGridAxis
IfcGrid
IfcAnnotation
IfcWindow
IfcDoor
IfcCovering
IfcFurnishingElement
IfcOpening
IfcDistributionControlElement
IfcDistributionPort
IfcDistributionFlowElement
IfcDistributionChamberElement
IfcEnergyConversionDevice
IfcFlowFitting
IfcFlowController
IfcFlowMovingDevice
IfcFlowSegment
IfcFlowStorageDevice
IfcFlowTerminal
IfcFlowTreatmentDevice
IfcMember
IfcFooting
IfcPile
IfcReinforcingBar
IfcReinforcingMesh
IfcTendon
IfcTendonAnchor
IfcPlate
IfcDiscreteAccessory
IfcFastener
IfcMechanicalFastener
IfcSpace

BimAnalyticalModelCIS / 2IFC

1. BIM>>>
2. **AMExportFormat1IFC0CIS / 2**

""BimAnalyticalModel

Analytical Model

IFC/

THCAD/IFC///

txt

- /
- /
IFCTHCAD

```
IfcWall BimDbColumn
```

In case of Export, you first write the THCAD class, followed by the IFC class in which the entities should be exported. For example:

```
BimDbWall IfcColumn
```

Note: when an IFC or BimDB entity isn't listed in the Import or Export mapping file, the default mapping will be used.

- **Exclude an entity from the Import/Export**
Write the IFC or BimDb entity followed by 'skip'.

For example for Import:

```
IfcWall skip
```

For example for Export:

```
BimDbWall skip
```

- **Import/Export only the listed entities**
List the entities that should be imported/exported followed by '* skip' on the next line. The asterix refers to all not listed entities.

```
* skip
```

- **Import/Export all not listed entities by the same special mapping**
Write the asterix followed by the name of the class in which the entities should be imported.

For example for Import:

```
* BimDbWall
```

For example for Export:

```
* IfcWall
```

- **Import/Export entities by default mapping when using the asterix**
If you used one of the two previous options to skip all entities except the listed ones or to Import/Export by special mapping, you can still Import /Export entities by default mapping. Use the same text as you use to Import/Export an entity by special mapping. Instead of writing a special mapping next to the entity, write the default class or write 'default'.

For example for Import:

```
IfcWall BimDbWall  
or  
IfcWall default
```

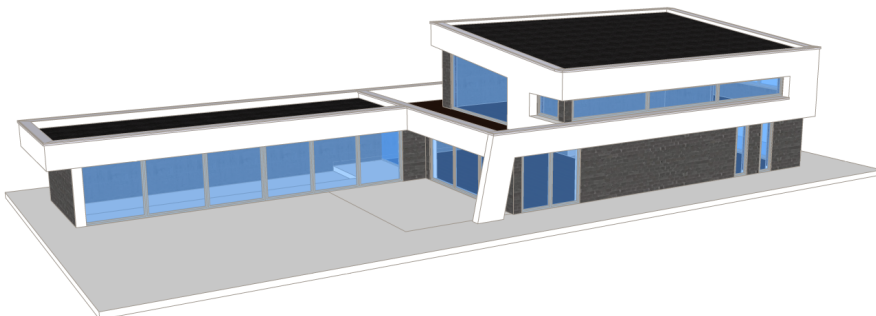
For example for Export:

```
BimDbBeam IfcBeam  
  
BimDbBeam
```

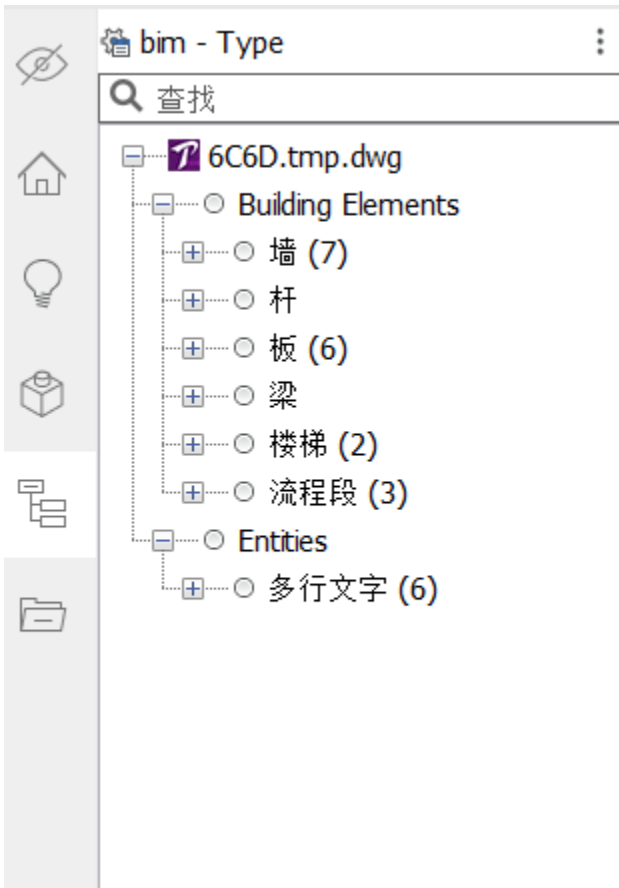
"IFC"/

IFC

1. THCAD

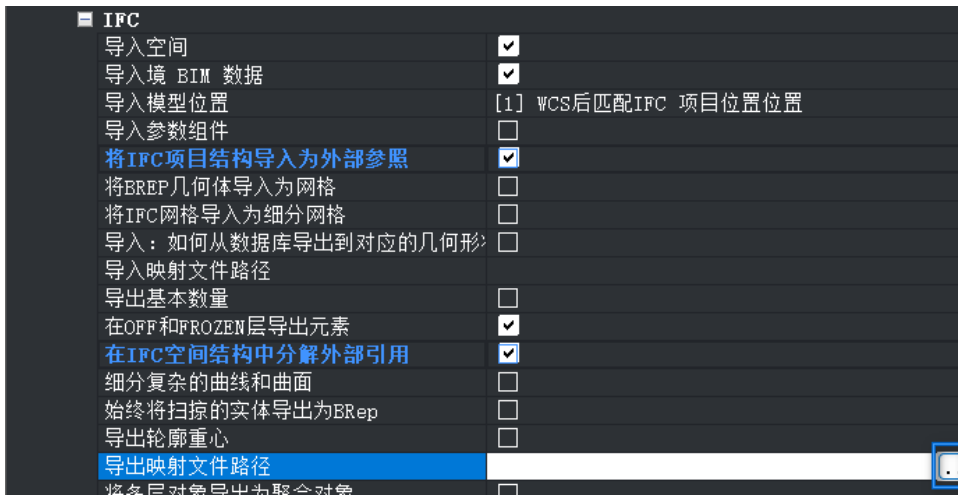


2.



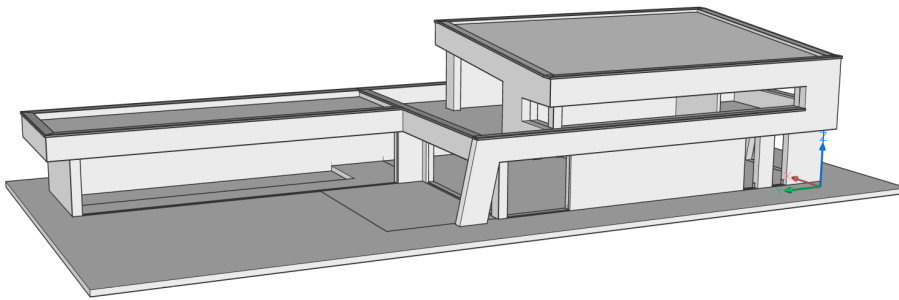
""

- IFC
- 3. txtASCII
- 4. " IFC"/txt
 - BimDbIFCIFC
 -
 - THCADIfcWallStandardCaseIfcWall
- 5. txt
 - /
 - THCAD
 - BimDbWindow
 - BimDbCurtainWall
 - BimDbDoor
 - BimDbSpace
 - THCAD
 - BimDbBeam IfcWall
 - BimDbWindow
 - BimDbCurtainWall
 - BimDbDoor
 - BimDbSpace
 - BimDbBeam IfcWall
- 6. " *"
- 7. THCAD
- 8.
 - EnterBIM>> IFC>



- IFCExportMappingPath
IFCEXPORTMAPPINGPATH<"">
Enter

9. EnterTHCAD
10. "" .ifcIFC
11. IFCIFCTHCAD



IFCBIMIFC